

Dairyland Xplorers

Clarabelle's Farm trail

5-7 years



Children must be accompanied by an Adult.

Age groups are for guidance only.

The Farm Trail is designed to be both fun and informative.

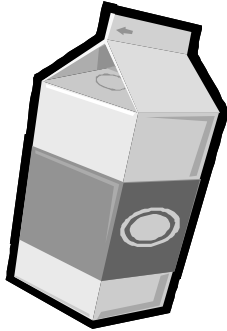
The Farm trail starts at the old creamery and takes you on a journey around the exhibits and the Orbitor

The Old Creamery

What do we drink
that comes from
Cows?
Circle the picture



A) Juice



b) Milk



C) Water

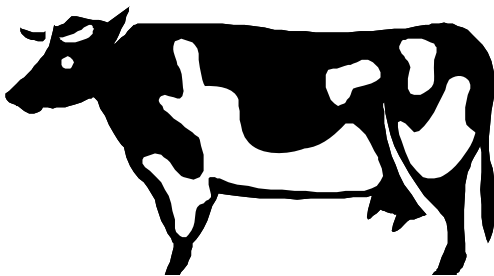
How do we keep milk
cold in the home?

Look around the creamery and
name 3 things you can see
people making from milk.

A)

B)

C)



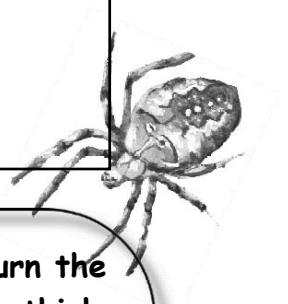
Cider Pound

You can grow other things on a farm such as fruit and cereals. Take a walk through the Heritage centre to see what other things can be made on a farm.

Draw and name the fruit you can see in the bucket



A large empty rectangular box for drawing and writing.



What drink can you make by squashing this fruit?

An animal helped to turn the big wheel what do you think it was?

- A) Frog
- B) Spider
- C) Horse

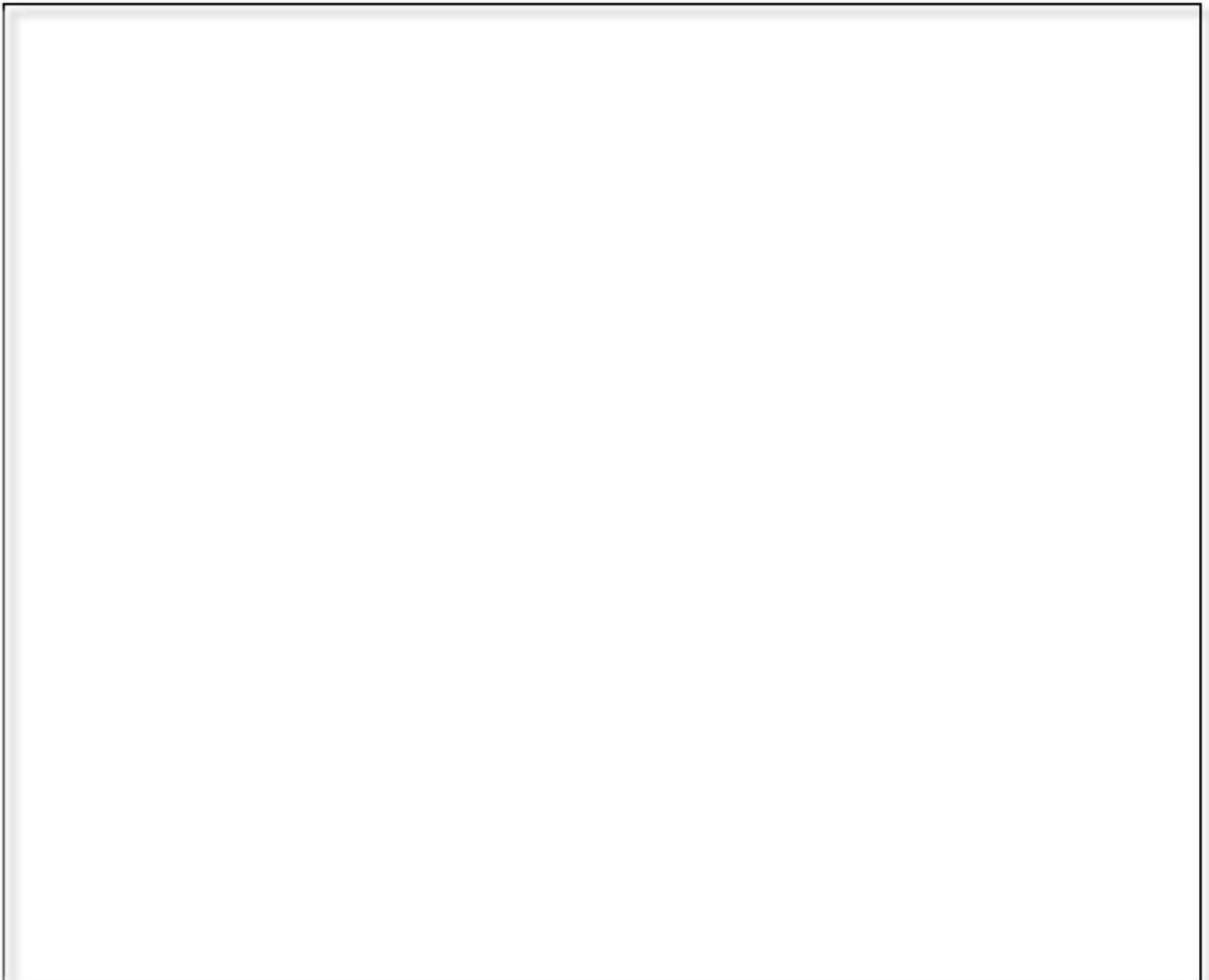
Harvest room

The machinery in here was used to cut and gather crops

How many forks can you see in the Harvest room?

What colour is the Cornish wagon and what do you think it was used for?

Can you draw 2 different types of forks you see in the Harvest room?

A large empty rectangular box with a thin black border, intended for drawing two different types of forks as requested in the question above.

The Mill

Now wander to the Mill.

Look around the Mill
and find a tool or ma-
chine that was used a
long time ago.
Draw a picture in the
box below

Join the dots to see what tasty
treat is revealed



A) Draw a picture of it

B) Write its name.

Alternative energy

Walk through the mill to see how Alternative energy can be used to power machines

a) Water wheel pump is powered by

b) Wind generator pump is powered by

c) The bicycle is powered by

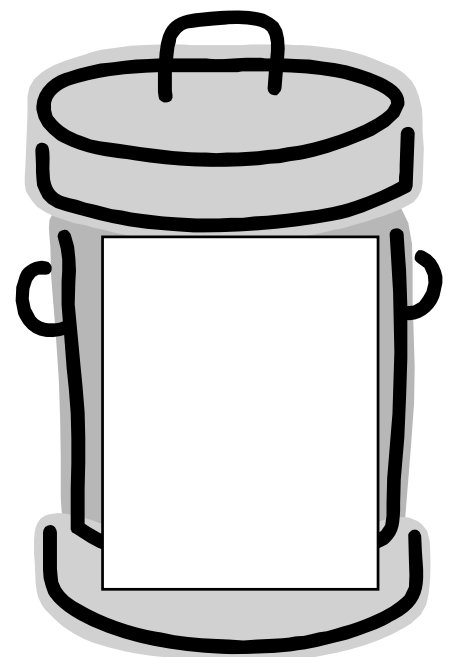
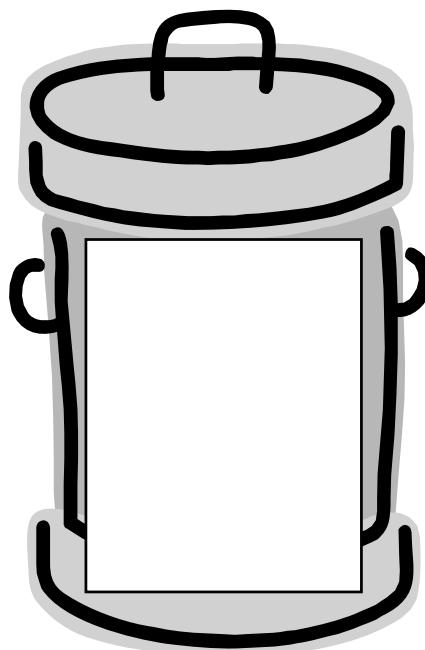
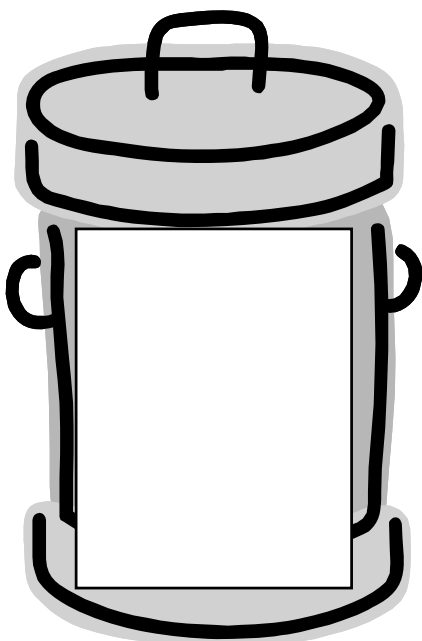
Find the 3 markers with the letters a, b, c and write down what energy source each machine is powered by.

Make your way to the Orbitior building and find the recycling centre

Recycling

Draw in the 3 bins things you use that can be recycled.

How many recycling banks does Cornwall have?



The Orbitor

Make your way to the Orbitor

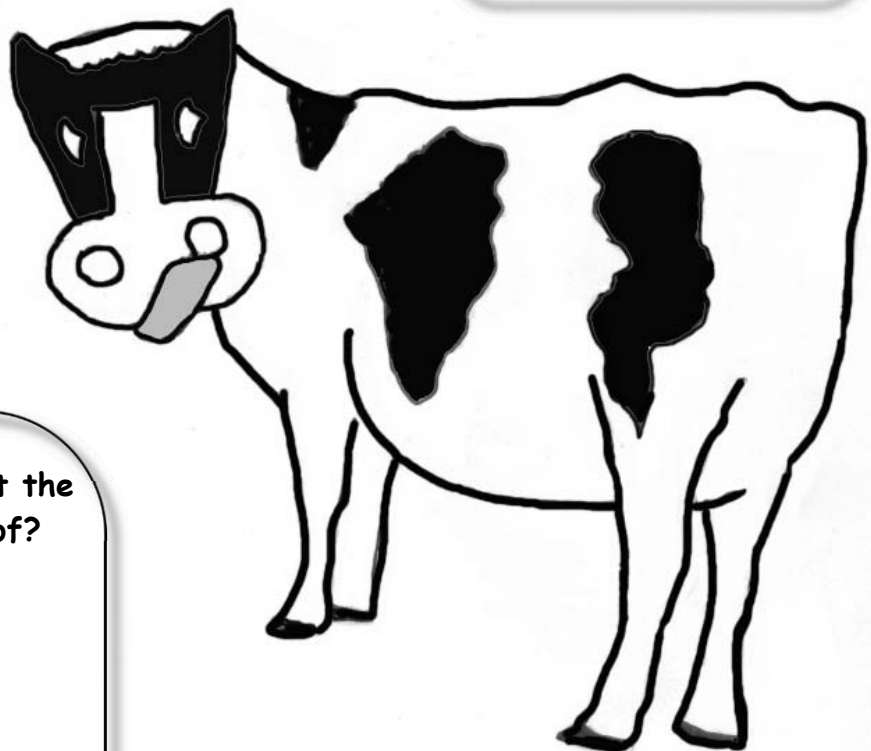
How many cows can be milked at one time?

Why is Milk good for you?

Hunt for the big plastic cow

How many udders does a cow have?

Draw the missing udders, tail and ears on Clarabelle



What are the jars that the milk goes into made of?

- A) Wool
- B) Glass
- C) Wood